

12 Raglan Court Regent Street, Gloucester, GL1 4UB

£650 PCM

TO LET

CHOSEN
ESTATE AGENTS

- AVAILABLE END OF JAN
- FRIDGE INCLUDED
- NEW CARPETS
- NO PARKING
- COUNCIL TAX BAND A
- TOP FLOOR STUDIO APARTMENT
- WASHING MACHINE INCLUDED
- FRESHLY PAINTED THROUGHOUT
- NEW KITCHEN
- EPC D

THE PROPERTY

Chosen Estate Agents are delighted to present this recently refurbished TOP floor STUDIO flat located in the heart of Tredworth, Gloucester.

The property has been updated throughout, featuring brand new carpets and flooring, along with fresh décor to create a bright and modern living space. Kitchen comes equipped with a brand new oven, hob, fridge and washing machine.

Please note: no pets are permitted under the headlease, and no smokers and no parking

Holding Deposit: £150.00 based on 1 weeks' rent of asking price

Security Deposit: £750.00 based on 5 weeks' rent of asking price

Council Tax band: A Local Authority: Gloucester City

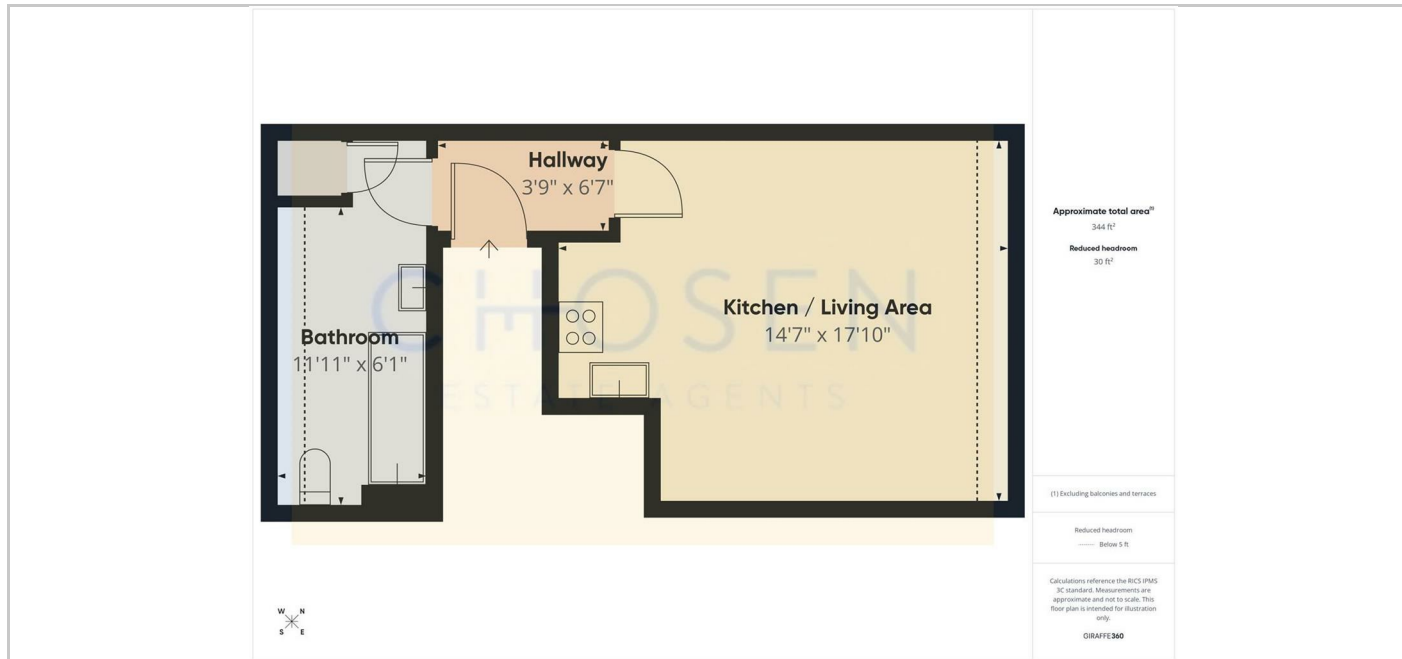
EPC Band: D

Electricity supply: Mains Water supply: Mains Sewerage: Mains

Heating: Electric heating Mobile phone coverage: i.e EE, Vodafone, Three, O2

If satisfactory references are not obtained or you withdraw your application any financial loss to Chosen Estate Agents or the Landlord will be deducted from your holding deposit. If you or your guarantor provides information that is inaccurate, false, incomplete, or adverse credit not being disclosed then we may retain your holding deposit and reject your application.

SITUATION



Directions

2 Church Road, Churchdown, Gloucestershire, GL3 2ER

Tel: 01452 857421 Email: info@chosenestateagents.co.uk www.chosenestateagents.co.uk